



**AUSTRALIAN
COLLEGE**
EXPANDING YOUR HORIZONS

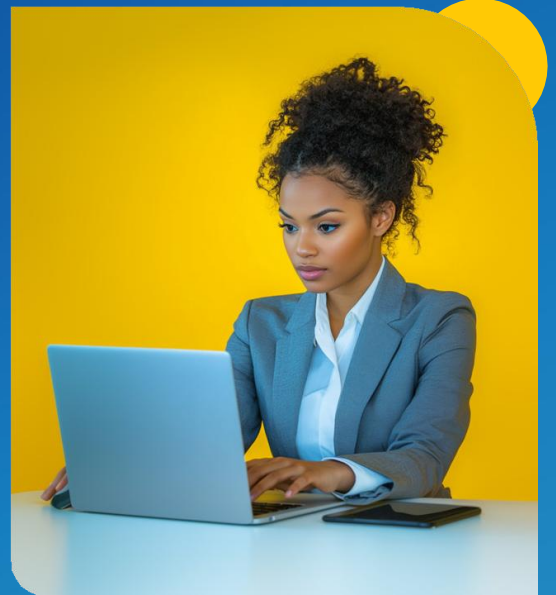
Course Brochure

CHC30125

**Certificate III in Early
Childhood Education and Care**

www.australiancollege.edu.au

Why should you choose to study with Australian College?



✓ Flexible Learning

- Self paced
- Access your training wherever and whenever suits your lifestyle

✓ Unparalleled Support

- Full access to your virtual campus 24/7
- Unlimited trainer, assessor and student services support throughout your studies

✓ Payment Plans To Suit You

- Flexible, cost-effective, interest free, payment options
- Price-match opportunity available

✓ More Opportunities For You

- Thousands of our students have already graduated with nationally recognised qualifications
- Begin an exciting career with some of the best-known companies in Australia or Internationally
- Own and operate your own business
- Up skill and climb the corporate ladder
- Learn something different and take your hobby to the next level

**Join our graduates enjoying successful,
exciting careers across many industries.**

Our Courses

Use our key to help you identify where you're at and which course would be suitable for you.

Certificate level	Description
Certificate II	First job or entry into the workforce.
Certificate III	VET education for high school students.
Certificate IV	Already employed in an entry level job and looking to expand your knowledge, move up the corporate ladder.
Diploma	Already working and looking to move into a frontline management role, more senior position, or area of specialisation.

Accredited Courses

CHC30125 Certificate III in Early Childhood Education and Care

COURSE SUMMARY

Course Code: CHC30125 Flexible duration: Up to 18 months

Qualification gained: Certificate III in Early Childhood Education and Care Study load: Self-paced

Training Package: CHC Community Services Training Package Start date: Start anytime

Nationally recognised: 

Weekly Duration: A minimum of 20hrs/week of structured learning and 10 hrs of assessment preparation is recommended for each unit of competency

Delivery Methods: Self-paced completed online in your own time, at your own pace, using an asynchronous study methodology, utilising mainly online delivery (eLearning) of learning materials.

We provide our students with ongoing support throughout the course duration via telephone, emails and/or virtual online meetings, on request.

The course also requires completion of at least **160 hours work** placement in a regulated children's education and care service in Australia, which will provide the student with hands on experience under the supervision of a qualified and experienced workplace supervisor.

*Note: It is the student's responsibility to organise their own work placement for the course. Please contact the College for more information.

Assessment method: Knowledge/theory-based short answer questions, case-studies, audio/video (role-plays), projects, direct observations* conducted by the RTO Assessor virtually (online) and supervised workplace practical activities.

Please note that practical demonstrations and roleplays will have to be video recorded and submitted via Australian College LMS.

*Note: Direct observations will be organised at a time convenient for all parties (ie. Student, Workplace Supervisor and Assessor) and are conducted by the RTO Assessor virtually (online), only once all workplace activities have been completed.

Course units:	CHCECE055 Meet legal and ethical obligations in children's education and care	Core
	CHCECE056 Work effectively in children's education and care	Core
	HLTWHS001 Participate in workplace health and safety	Core
	CHCECE030 Support inclusion and diversity	Core
	CHCECE034 Use an approved learning framework to guide practice	Core
	CHCECE036 Provide experiences to support children's play and learning	Core
	CHCECE037 Support children to connect with the natural environment	Core
	CHCECE038 Observe children to inform practice	Core
	CHCECE054 Encourage understanding of Aboriginal and/or Torres Strait Islander people's cultures	Core
	CHCPRT025 Identify and report children and young people at risk	Core
	CHCPRP003 Reflect on and improve own professional practice	Elective
	CHCECE035 Support the holistic development of children in school age care	Core
	CHCECE032 Nurture babies and toddlers	Core
	CHCECE033 Develop positive and respectful relationships with children	Core
	CHCDIV001 Work with diverse people	Elective
	CHCECE031 Support children's health, safety and wellbeing	Core
	HLTAID012* Provide First Aid in an education and care setting	Core

* HLTAID012 Provide First Aid in an education and care setting is not delivered by Australian College. Students are required to attain this unit with another provider and submit their AQF certification document, so that Credit Transfer for this unit may be applied.

Note: All the above listed units of competency must be completed to receive the CHC30125 Certificate III in Early Childhood Education and Care full qualification

Course Completion:	This qualification consists of 17 units (15 core units and 2 elective units). Students obtaining a 'Competent' result for all units of competency will achieve the CHC30125 Certificate III in Early Childhood Education and Care certificate. A Statement of Attainment will be issued to students who complete less than the required units for the full qualification. <small>*Note: Australian College does not guarantee successful completion of the course nor guarantees a particular employment outcome on completion of the qualification.</small>
Career opportunities:	Early childhood educator, outside school hours care assistant, playgroup supervisor, recreation assistant, family day care worker, nanny, childhood educator assistant, coordinator in long day care/preschool.

COURSE DESCRIPTION/SUMMARY

This qualification reflects the role of educators in early childhood education and care who work in regulated children's education and care services in Australia. They support children's wellbeing and development in the context of an approved learning framework. Educators use a range of well-developed skills and knowledge using discretion and judgement when carrying out their work in the context of established policies and procedures. They may work independently or under the guidance of other, though in some contexts that guidance may not be onsite. Early childhood educators work in long day care centres, family day care, pre-schools or kindergartens.

To achieve this qualification, the student must have completed a minimum of **160 hours of work** in a regulated children's education and care service in Australia as detailed in the Assessment Requirements of units of competency. The total number of hours may be applied collectively across all units of competency that include the requirement for workplace hours.

WORK PLACEMENT (Experience)

This qualification requires students to complete a minimum of **160 hours of work** in a regulated children's education and care service in Australia as detailed in the Assessment Requirements of the units of competency. The total numbers of hours may be applied collectively across all units of competency that include the requirements for workplace hours and practical demonstrations.

*Note: Eligible students are required to complete a Police Check, Working With Children Check or Blue Card (as applicable for their state/territory in which they will be conducting work placement). Any costs for these checks will be paid by the student. Students are advised that the National Health and Medical Research Council (NHMRC) recommends immunisation for hepatitis A, hepatitis B, and influenza (as applicable in accordance with local jurisdictions), prior to commencing any work placement. Students to check with their workplace on all or specific requirements for the centre

ENTRY REQUIREMENTS

The training package does not stipulate any mandatory entry requirements for the qualification delivered by this course. However, Australian College has certain admission criteria for this course. Prospective students must:

- Students should be a minimum of 18 years of age at the time of enrollment. Applications from students under 18 may be considered on an individual basis, with parental consent required for all students under 18.
- complete the pre-enrolment process including the pre-enrolment Language, Literacy, Numeracy and Digital test;
- obtain their Unique Student Identifier (USI) and provide it to Australian College;
- have access to an approved operational early childhood and care environment to complete work placement requirements;
- have access to work colleagues or individuals prepared to participate in audio/video roleplays for specific assessment tasks;
- agree to comply with Australian College policies and procedures as published on the website and outlined in the Student Handbook.

Students enrolled in early childhood education courses must provide evidence of the following prior to attending their work placement:

- Working with Children Check (WWCC) or Blue Card (State Specific)
- Health checks (where required by the childcare centre)
- Current immunisation records

Students must have access to and be able to operate:

- An internet-enabled PC/Laptop or similar running a current operating system (E.g Windows 10 or Mac OSX)
- An audio/video recording device (such as a mobile phone) for the purpose of preparing audio/video assessment recordings
- Microsoft Office (or compatible software)
- Current web browser (e.g., Chrome)
- Adobe Acrobat Reader or another PDF document viewer
- Valid email address

QUALIFICATION PATHWAYS

This course, CHC30125 Certificate III in Early Childhood Education and Care is a pre-requisite and entry requirement for the CHC50125 Diploma of Early Childhood Education and Care course. Graduates may choose to further their study through enrolment in the CHC50125 Diploma of Early Childhood Education and Care, CHC30221 Certificate III in School Based Education Support or the CHC40225 Certificate IV in School Based Education Support.

TARGET GROUP

Prospective students would see this course as a stepping-stone in their career development, regardless of their current role. It may be a job requirement or a request from and supported by their employer. For some prospective students, undertaking this course may also be at their own initiative, aligning with their personal or professional career objectives.

Prospective students may be:

- School leavers wanting to enter the early childhood education and care industry.
- Existing workers who want to gain a nationally recognised qualification.
- Adults who want to gain knowledge and skills and a qualification in early childhood education and care to enter or re-enter the workforce or change their career.
- Mature aged workers who want to upskill and improve their employment opportunities

RECOGNITION OF PRIOR LEARNING (RPL) AND CREDIT TRANSFER

RPL and Credit Transfer is available for all students to consider. Students will be provided with information about RPL and Credit Transfer prior to enrolment. Australian College will recognise the AQF qualifications and statements of attainment issued by other RTO's, upon verification with the issuing organisation.

For more information on RPL and Credit Transfer please refer to the student handbook.

Email us for inquiries at admin@australiancollege.edu.au.

NSW GOVERNMENT FUNDING

This course is subsidised by the NSW government under the Smart and Skilled program. For more information and if you qualify for funding, please visit our website at: <https://www.australiancollege.edu.au/smart-and-skilled-funding/>.

WHERE CAN I FIND MORE INFORMATION

It is important to us that prospective students have all the information needed to ensure this is the right course for them and we are the right training provider for them.

Please, visit our website at www.australiancollege.edu.au/ and read our Student Handbook, our policies and procedures for more information needed to make that all-important decision.

Overseas Students Policy

This course is not available to students on an Overseas Student Visa. As defined in the ESOS Act 2000, 'Overseas students' are not eligible to apply to enrol in this nationally recognised course, nor are they eligible for certification. Please refer to the student handbook.

Document Review: January 2026



**AUSTRALIAN
COLLEGE**
EXPANDING YOUR HORIZONS

**If you have any questions about the
College, our courses, or need help with
enrolment, please contact us.**



**Unit 10 17 Gerrale Street
Cronulla NSW 2230 Australia**



**General enquiries:
enquiry@australiancollege.edu.au**



**Office hours:
Mon-Fri 9am-5pm**



**Payment enquiries:
payments@australiancollege.edu.au**



**Local call 1300 783 283
International +61 02 9386 2500**



**ABN: 79 111 194 015
RTO: 91110
Centrelink: 2P721**



www.australiancollege.edu.au